



Part No. ALL56077-56089

"Swiveler" Spring Cups

Swiveler cup is used in place of a standard upper spring plate and weight jack bolt on vehicles using conventional style coil springs. Mono-ball stud mount allows cup to pivot as needed to prevent binding during suspension travel and requires a weight jack bolt with a 7/16"-20 internal threaded end for proper installation.

Welded Style ALL56080

The sleeve and top are welded together on this unit to fit most applications using a 5" conventional spring.



Welded Style

Pro-Series

Components bolt together to select the desired spring top plate and sleeve separately to build custom size cups.

Spring Top Plates

ALL56077.....Plate For 5" Spring

ALL56078.....Plate For 5-1/2" Spring

Spring Sleeves

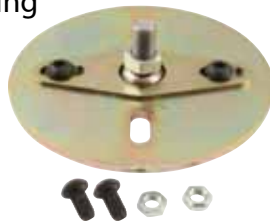
ALL56086.....3.25"

ALL56087.....3.50"

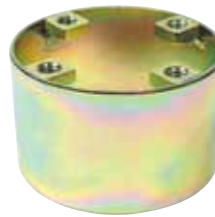
ALL56088.....3.75"

ALL56089.....4.00"

ALL56085.....4.25"



Spring Top Plate



Spring Sleeve



Pro-Series (Assembled)

Weight Jack Bolts - with 7/16"-20 internal threads for use with Swiveler style spring cups.

Fine 1-1/8"-12 External Threads

ALL56090.....6" Aluminum

ALL56091.....8" Aluminum

ALL56092.....6" Steel

ALL56093.....8" Steel

Coarse 1"-8 External Threads

ALL56094.....4" Steel

ALL56095.....6" Steel



ALL56090



ALL56095