



Part No. **ALL68308-68309**

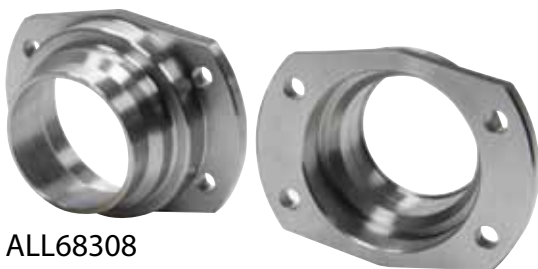
Ford 9" Housing Ends

Housing ends are welded into 3/16" wall x 3" O.D. axle tubes when building a custom width housing or converting to larger axles. Ends feature a stepped design with a beveled welding flange to help position flange in tube for easier installation.

Part No. Description

ALL68308.....Large Bearing, Late/Torino Style

ALL68309.....Large Bearing, Early Model

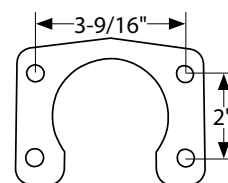


ALL68308

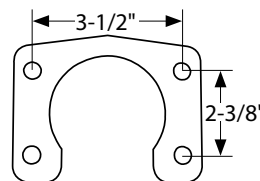


ALL68309

ALL72316
Large Bearing Late/Torino Style
With 3/8" Hardware



ALL72317
Large Bearing Early Style
With 1/2" Hardware



Related Items

ALL72316.....Axle Retainer, Large Bearing, Late/Torino Style

ALL72317.....Axle Retainer, Large Bearing, Early Style

ALL72316

ALL72317

REV100615

Allstar Performance 8300 Lane Dr., Watervliet, MI 49098
Phone: (269) 463-8000 Fax: (800) 772-2618 www.allstarperformance.com