



Part No. **ALL31030**
 ALL31040
 ALL31050

Aluminum SB Chevy Reduction Pulleys

Specifically for short or Corvette water pumps, pulleys work with power steering pump and pulley to provide a ratio within the GM specified RPM range. Race engine RPM differs greatly from street engines. For 30% less water pump speed and reduced weight and inertia, the crankshaft and water pump pulleys are smaller in diameter than standard reduction pulleys. Acceleration capabilities are greatly enhanced.

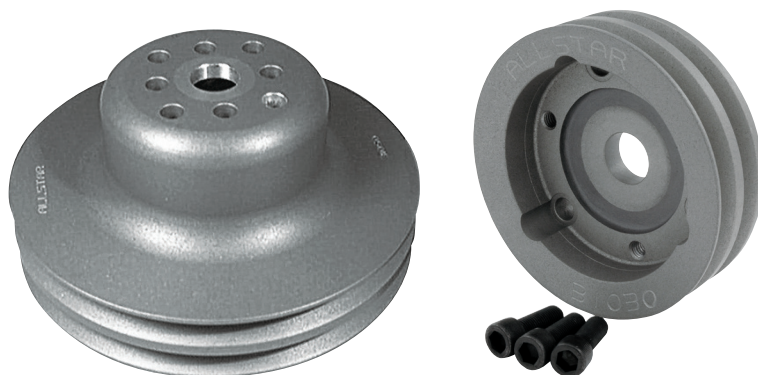
Part No.	Description
-----------------	--------------------

ALL31030.....	Crankshaft Pulley (4-3/4" Diameter)*
---------------	--------------------------------------

ALL31040.....	Water Pump Pulley, Short Pump w/ 5/8" Hole (6-5/8" Diameter)
---------------	--

ALL31050.....	Water Pump Pulley, Corvette Pump w/ 3/4" Hole (6-5/8" Diameter)
---------------	---

*** Note:** Crankshaft pulley will work with either water pump pulley without spacers.



Related Parts:

ALL86120.....Belt, Crank to Water Pump 31.5"

ALL86122.....Belt, Crank/Water Pump/Block Mount P/S Pump 39"

ALL86124.....Belt, Crank/Water Pump/Head Mount P/S Pump 42"

REV032713

Allstar Performance 8300 Lane Dr., Watervliet, MI 49098
Phone: (269) 463-8000 Fax: (800) 772-2618 www.allstarperformance.com