



Part No. ALL42085-42088

Metric Brake Rotors

New stock replacement brake rotor includes new bearing races and studs for most intermediate sized Metric chassis cars including Monte Carlo, Grand Prix, and Regal. Rotors measure 10.5" O.D. x 1.03" thick. Bearings and seal not included. Note: Both rotors will work with Allstar Performance metric spindles ALL56318 or ALL56319.

1979-81*

ALL42085.....Rotor With 12mm-1.50 Wheel Studs, 5 On 4-3/4" B.C.

ALL42086.....Rotor With 5/8"-11 Wheel Studs, 5 On 5" B.C.

Related Parts for 1979-81 Style Rotor:

ALL72160.....Spindle Lock Nut Kit

ALL72164.....Front Hub Dust Cap

ALL72305.....Master Bearing and Seal Kit

ALL72128.....Hub Seal

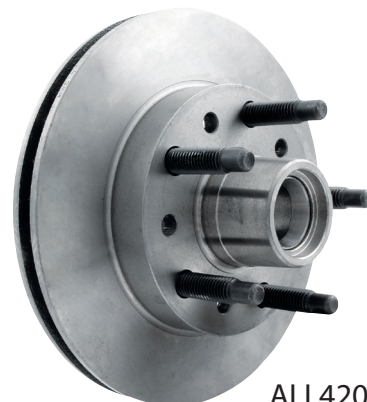
ALL72275.....Inner Bearing

ALL72277.....Outer Bearing

* Outer bearing race has a 1.97" O.D.



ALL42085



ALL42086

1982-88**

ALL42087.....Rotor With 12mm-1.50 Wheel Studs, 5 On 4-3/4" B.C.

ALL42088.....Rotor With 5/8"-11 Wheel Studs, 5 on 5" B.C.

Related Parts for 1982-88 Style Rotor:

ALL72160.....Spindle Lock Nut Kit

ALL72164.....Front Hub Dust Cap

ALL72306.....Master Bearing and Seal Kit

ALL72128.....Hub Seal

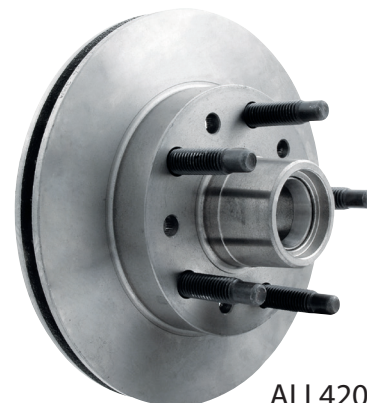
ALL72275.....Inner Bearing

ALL72278.....Outer Bearing

** Outer bearing race has a 1.78" O.D.



ALL42087



ALL42088

ALL72160



ALL72164



ALL72305

ALL72306



REV052119

Allstar Performance 8300 Lane Dr., Watervliet, MI 49098

Phone: (269) 463-8000 Fax: (800) 772-2618 www.allstarperformance.com