



Part No. ALL72100-72108

Ford 9" Axle Housing Seals

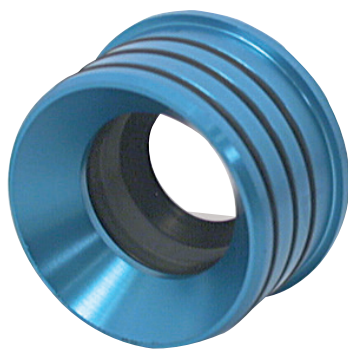
Internal seals prevent gear lube from leaking into axle tube to eliminate premature rear end failure. Seal housings are O-ring type with spring-loaded seals. For use with 3" O.D. axle tubes and most 31-spline axles. Measure I.D. of tube for proper fit.

| Part No. | Description |
|-----------|--|
| ALL72100* | 2.625" O.D. Fits 3/16" Wall, 3" Tube, Red |
| ALL72102 | 2.562" O.D. Fits 7/32" Wall, 3" Tube, Blue |
| ALL72104 | 2.500" O.D. Fits 1/4" Wall, 3" Tube, Gold |

*Use with Allstar steel and aluminum axle tubes.



ALL72100



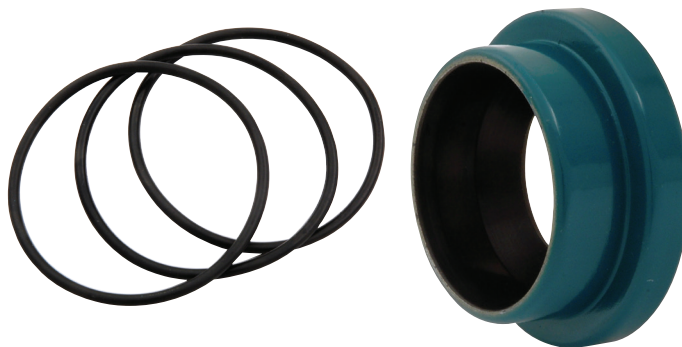
ALL72102



ALL72104

Replacement Components:

- ALL72101..... O-Rings For ALL72100, 3-Pack
- ALL72103..... O-Rings For ALL72102, 3-Pack
- ALL72105..... O-Rings For ALL72104, 3-Pack
- ALL72108..... Inner Seal



ALL72108

Allstar Performance 8300 Lane Dr., Watervliet, MI 49098
Phone: (269) 463-8000 Fax: (800) 772-2618 www.allstarperformance.com