



Part No. ALL26125-26127

SB Chevy Rear Main Seal Adapters

Billet aluminum adapter allows installation of a two-piece style crankshaft seal and early (pre-1986) crankshaft into a 1986 and newer SB Chevy (pre-LS) engine. Adapters include mounting hardware. Alignment tool ALL26127 (sold separately), is recommended to ensure proper installation and centering of adapter plate.

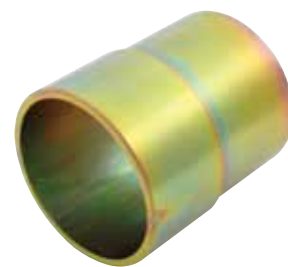
Part No.	Description
ALL26125.....	Seal Adapter For Early (Pre-'86) Oil Pan*
ALL26126.....	Seal Adapter For Late (86'-Up) Oil Pan*
ALL26127.....	Alignment Tool



ALL26125



ALL26126



ALL26127

***Note:**

Due to irregularities in block and oil pans this adapter is not designed to use the original style rubber rear oil pan seal. Apply a generous amount of RTV sealant to the trough of the adapter plate in place of the rear pan seal for proper sealing. Note: Make sure sealing areas are clean and free of oil before installation.



Part No.	Replacement Part
ALL99135.....	Replacement P-Bolt With Nut

Allstar Performance 8300 Lane Dr., Watervliet, MI 49098
Phone: (269) 463-8000 Fax: (800) 772-2618 www.allstarperformance.com

REV062316