



Part No. **ALL18628-18665**

Countersunk Bolt Kits with Aluminum Washers

Kit includes specially designed aluminum washers which allow the socket head fasteners to install flush with the surface creating a smooth finished look. Many uses include mounting roofs, side skirts, spoilers and replacing sharp edged fasteners inside cockpit. Kits include washers, bolts and nyloc nuts.

Countersunk Bolt Kits				
Bolt Size	Washer O.D.	Finish	10-Pack	50-Pack
#10-24 x 1"	1"	Clear	ALL18630	ALL18630-50
#10-24 x 1"	1"	Black	ALL18631	ALL18631-50
1/4"-20 x 1"	3/4"	Clear	ALL18628	ALL18628-50
1/4"-20 x 1"	3/4"	Black	ALL18629	ALL18629-50
1/4"-20 x 1"	1"	Clear	ALL18632	ALL18632-50
1/4"-20 x 1"	1"	Black	ALL18633	ALL18633-50
1/4"-20 x 1"	1-1/4"	Clear	ALL18634	ALL18634-50
1/4"-20 x 1"	1-1/4"	Black	ALL18635	ALL18635-50

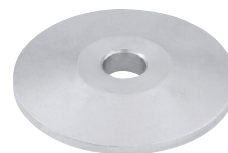


Kit Shown Installed On Sheet Aluminum

Countersunk Aluminum Washers			
Washer I.D. x O.D.	Finish	10-Pack	50-Pack
#10 x 1"	Clear	ALL18660	ALL18660-50
#10 x 1"	Black	ALL18661	ALL18661-50
1/4" x 3/4"	Clear	ALL18658	ALL18658-50
1/4" x 3/4"	Black	ALL18659	ALL18659-50
1/4" x 1"	Clear	ALL18662	ALL18662-50
1/4" x 1"	Black	ALL18663	ALL18663-50
1/4" x 1-1/4"	Clear	ALL18664	ALL18664-50
1/4" x 1-1/4"	Black	ALL18665	ALL18665-50



Countersunk Washer



Flat Backer Washer

Flat Aluminum Backer Washers			
Part No.	Washer I.D. x O.D.	Finish	Qty.
ALL18638	#10 x 1"	Clear	10
ALL18639	1/4" x 1"	Clear	10