

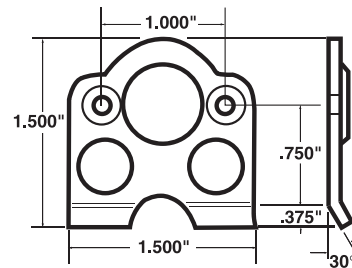


Part No. ALL19361  
 ALL19363  
 ALL19365  
 ALL19367

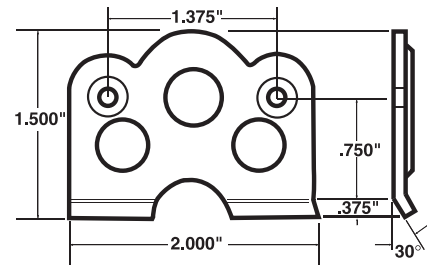
## Quick Turn Fastener Mounting Brackets With Spring

Description	10-Pack Part No.	50-Pack Part No.
Weld-On, Lightweight Bracket With 1" Spring (.0625" Thick)	ALL19365	ALL19367
Weld-On, Lightweight Bracket With 1-3/8" Spring (.0625" Thick)	ALL19361	ALL19363

ALL19365



ALL19361



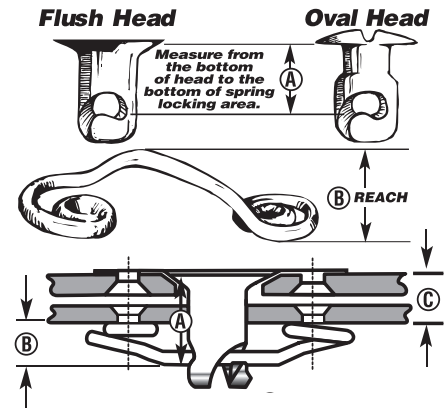
### Quick Turn Fastener Measurement Guidelines

To find [A] Fastener Length, add together [B] Spring Reach and [C] Material Thickness [including bracket if applicable].  $A=B+C$

### Quick Turn Fastener Selection

- Determine the total thickness of the panels being joined including mounting brackets and the space between the panels, if any.
- Select the proper body length and spring height combination which provides the proper thickness range.

Spring Length "B"	1" Springs	Fastener Length "A"				
		.400"	.450"	.500"	.550"	.600"
		Total Material Thickness "C"				
	.250"	.165"-.200"	.215"-.250"	.265"-.300"	.315"-.350"	.365"-.400"
	.325"	.098"-.133"	.148"-.183"	.198"-.233"	.248"-.283"	.348"-.383"
	1-3/8" Springs	Total Material Thickness "C"				
	.325"	.105"-.148"	.155"-.198"	.205"-.248"	.255"-.298"	.355"-.398"
	.375"	.055"-.098"	.105"-.148"	.155"-.198"	.205"-.248"	.305"-.348"
	.425"	.005"-.048"	.055"-.098"	.105"-.148"	.155"-.198"	.255"-.298"



REV040720

Allstar Performance 8300 Lane Dr., Watervliet, MI 49098  
 Phone: (269) 463-8000 Fax: (800) 772-2618 [www.allstarperformance.com](http://www.allstarperformance.com)