



Part No. ALL26100  
ALL26101

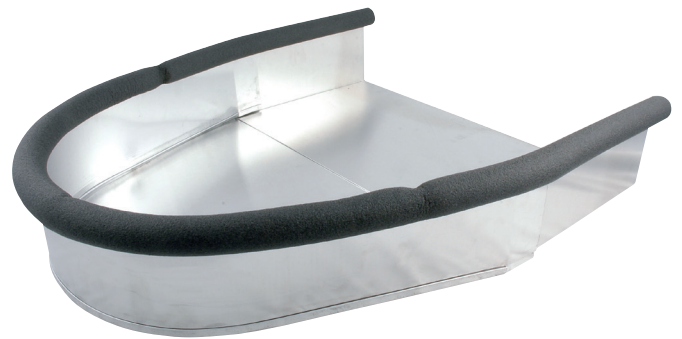
## Air Pans

Lightweight aluminum air pans fit between the carburetor and cowl area to keep engine heat away from and direct cool air to the carburetor. Cooler intake air means extra horsepower. Carb mounting flange is uncut.

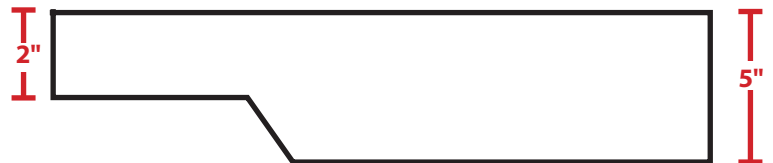
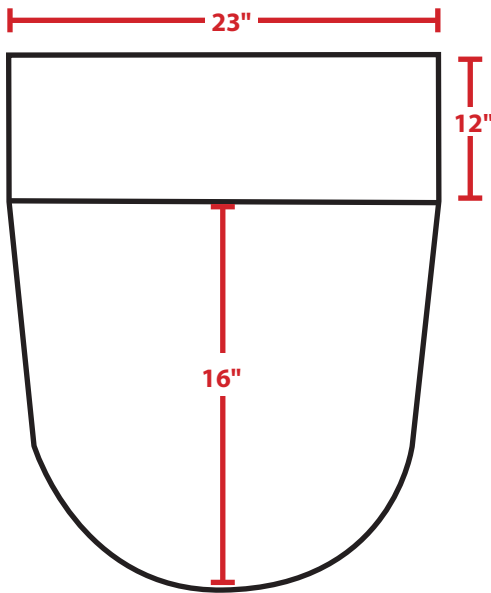
Part No.	Description
ALL26100.....	Stepped Plenum
ALL26101.....	Flat Plenum



ALL26100



ALL26101



REV052621