



Part No. **ALL30010-ALL30043**

## Single Pass Radiators

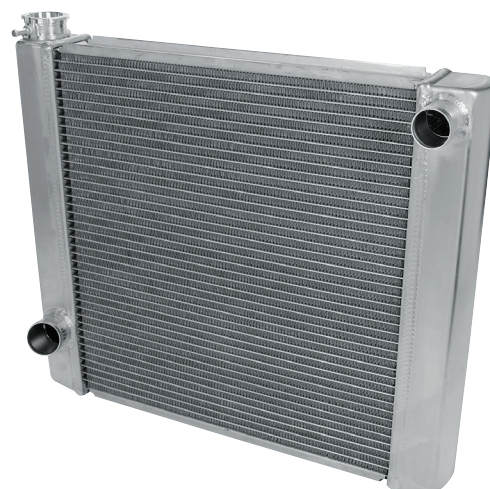
Aluminum radiators are fully welded units designed to hold up to the stresses of most motorsports and street use applications. Radiators feature two rows of 1" wide tubes that are furnace brazed to the tanks and a fully welded billet aluminum filler neck with a removable overflow fitting. All radiators feature a slightly raised and inward angled 1-3/4" beaded lower outlet for applications that require the radiator to be mounted lower in the chassis. Sizes listed are overall dimensions, core widths are approximately 5" less than overall width. Radiator caps rated at 28lbs or less are recommended for all aluminum radiators.

Our most popular radiator, this design allows coolant to enter the top inlet and flow from one side of the radiator to the other and exit the opposite side. These radiators feature beaded standard hose fittings for push-on style radiator hoses, 1-1/2" upper inlet and 1-3/4" lower outlet.

Overall Dimensions	
GM	
ALL30010	19" x 22"
ALL30011	19" x 24"
ALL30012	19" x 26"
ALL30014	19" x 28"
ALL30016	19" x 31"
ALL30042	16" x 26"
Ford	
ALL30020	19" x 22"
ALL30021	19" x 24"
ALL30022	19" x 26"
ALL30024	19" x 28"
ALL30026	19" x 31"
ALL30043	6" x 28"



ALL30010



ALL30020



(View shows base of radiator)

### Replacement Part:

ALL99312.....Overflow Fitting 1/8" NPT to 5/16" Hose

REV080824

**Allstar Performance 8300 Lane Dr., Watervliet, MI 49098**  
**Phone: (269) 463-8000 Fax: (800) 772-2618 [www.allstarperformance.com](http://www.allstarperformance.com)**