



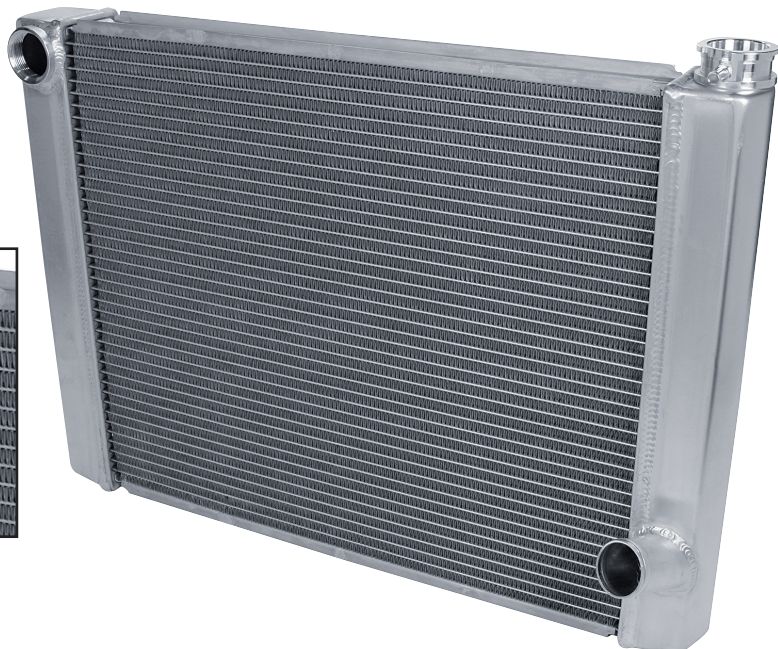
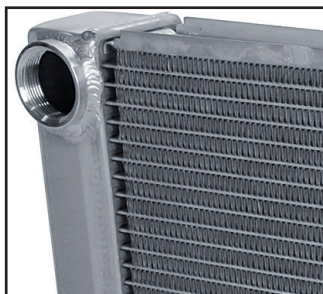
Part No. ALL30045-ALL30048

## Triple Pass Radiators

Aluminum radiators are fully welded units designed to hold up to the stresses of most motorsports and street use applications. Radiators feature two rows of 1" wide tubes that are furnace brazed to the tanks and a fully welded billet aluminum filler neck with a removable overflow fitting. All radiators feature a slightly raised and inward angled 1-3/4" beaded lower outlet for applications that require the radiator to be mounted lower in the chassis. Sizes listed are overall dimensions, core widths are approximately 5" less than overall width. Radiator caps rated at 28lbs or less are recommended for all aluminum radiators.

Triple pass radiators circulate coolant across the top portion of the radiator, back across the mid-section and through the bottom allowing maximum heat dissipation. This style radiator requires a high flow water pump to be most effective. These radiators feature a universal 1-5/8"-12 ORB fitting inlet design that allows for multiple inlet fitting options (sold separately). The lower outlet is a fully welded 1-3/4" standard hose fitting for push-on style radiator hoses.

Part No.	Overall
ALL30045	19" x 24"
ALL30046	19" x 26"
ALL30047	19" x 28"
ALL30048	19" x 31"



### Inlet Fittings:

ALL30038.....1-1/2" Standard Hose

ALL30041.....1-3/4" Hose\*

ALL30039.....-16AN

ALL30040.....-20AN

\*Use With Lower Radiator Hose.



ALL30038



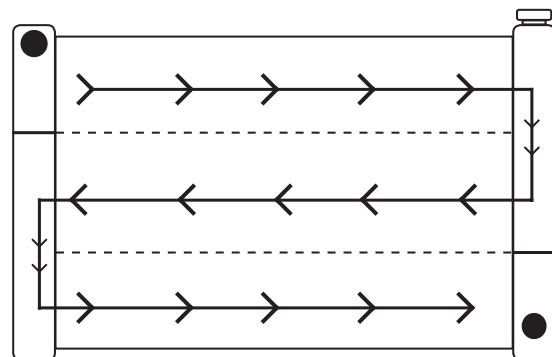
ALL30041



ALL30039



ALL30040



### Replacement Part:

ALL99312.....Overflow Fitting 1/8" NPT to 5/16" Hose

REV080824

**Allstar Performance 8300 Lane Dr., Watervliet, MI 49098**  
**Phone: (269) 463-8000 Fax: (800) 772-2618 [www.allstarperformance.com](http://www.allstarperformance.com)**