



Part No. ALL42086-42088

Metric Brake Rotors

New stock replacement brake rotor includes new bearing races and studs for most intermediate sized Metric chassis cars including Monte Carlo, Grand Prix, and Regal. Rotors measure 10.5" O.D. x 1.03" thick. Bearings and seal not included. Note: Both rotors will work with Allstar Performance metric spindles ALL56318 or ALL56319.

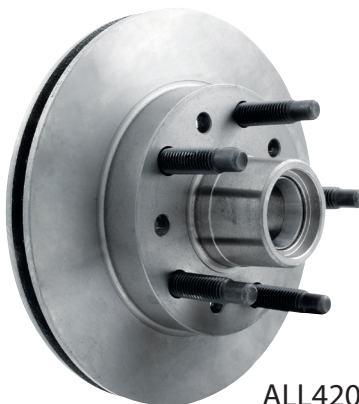
1979-81*

ALL42086.....Rotor With 5/8-11 Wheel Studs, 5 On 5" B.C.

Related Parts for 1979-81 Style Rotor:

- ALL72160.....Spindle Lock Nut Kit
- ALL72164.....Front Hub Dust Cap
- ALL72305.....Master Bearing and Seal Kit
- ALL72128.....Hub Seal
- ALL72275.....Inner Bearing
- ALL72277.....Outer Bearing

* Outer bearing race has a 1.97" O.D.



ALL42086

1982-88**

ALL42087.....Rotor With 12mm-1.50 Wheel Studs, 5 On 4-3/4" B.C.

ALL42088.....Rotor With 5/8"-11 Wheel Studs, 5 on 5" B.C.

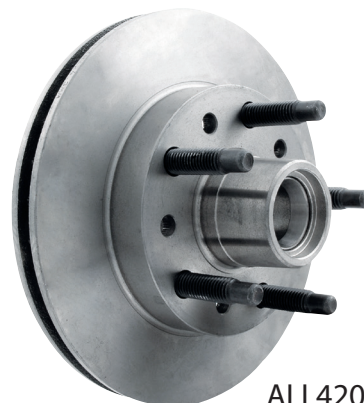
Related Parts for 1982-88 Style Rotor:

- ALL72160.....Spindle Lock Nut Kit
- ALL72164.....Front Hub Dust Cap
- ALL72306.....Master Bearing and Seal Kit
- ALL72128.....Hub Seal
- ALL72275.....Inner Bearing
- ALL72278.....Outer Bearing

** Outer bearing race has a 1.78" O.D.



ALL42087



ALL42088

ALL72160



ALL72164



ALL72305
ALL72306



REV121620

Allstar Performance 8300 Lane Dr., Watervliet, MI 49098
Phone: (269) 463-8000 Fax: (800) 772-2618 www.allstarperformance.com