



Part No. ALL68375-ALL68386

## Pinion Yokes

### Ford 9" Yokes

Part No.	Spline	U-Joint	Width	Cap Dia.	Material	Length
ALL68384	28spl	1310	3-1/4"	1.062"	Aluminum	Standard
ALL68375	28spl	1310	3-1/4"	1.062"	Cast Steel	Standard
ALL68376	28spl	1330	3-5/8"	1.125"	Cast Steel	Standard
ALL68377	28spl	1330	3-5/8"	1.125"	Cast Steel	1" Longer
ALL68378	28spl	1350	3-5/8"	1.187"	Cast Steel	Standard
ALL68380	28spl	1350	3-5/8"	1.187"	Forged Steel	Standard
ALL68382	35spl	1350	3-5/8"	1.187"	Forged Steel	Standard

### Quick Change Yoke

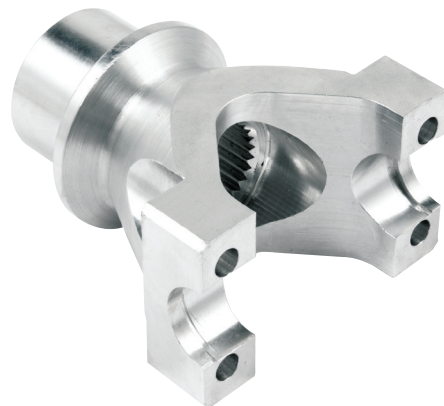
Part No.	Spline	U-Joint	Width	Cap Dia.	Material	Length
ALL68385	10spl	1310	3-1/4"	1.062"	Cast Steel	Standard
ALL68386	10spl	1310	3-1/4"	1.062"	Cast Steel	1" Longer



ALL68380



ALL68382

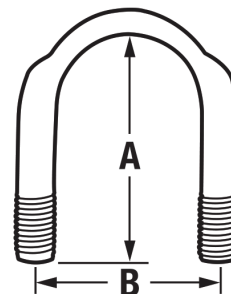


ALL68384

### U-Bolt Kits (sold in pairs with nuts and lock washers)

U-Bolt Part No.	U-Joint Series	Cap	Thread	"A"	Stud CTC "B"
ALL69015	1310/1330	1-1/16"/1.062"	5/16"-24	1.750"	1.400"
ALL69017	1310/1330	1-1/16"/1.062"	5/16"-24	2.000"	1.400"
ALL69018	1330*	1-1/8"/1.125"	5/16"-24	1-7/8"	1.575"
ALL69016	1350	1-3/16"/1.187"	3/8"-24	2.000"	1.625"

\*1330 With Big Caps (1.125")



REV063021

**Allstar Performance 8300 Lane Dr., Watervliet, MI 49098**  
**Phone: (269) 463-8000 Fax: (800) 772-2618 www.allstarperformance.com**