

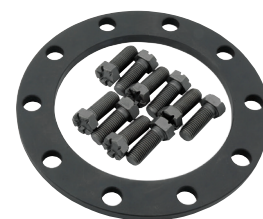


Part No. ALL70010-ALL70128

Ring & Pinion Gear Sets

Quality differential components are suitable for race, street and off-road use. Lapped in matched sets for quiet operation.

Part No.	Ratio	Tooth Count
Ford 9" (10-Bolt) 28-Spline Pinion		
9" Diam. Ring Gear 1.313" Diam. Pinion Stem		
ALL70010	3.50	35-10
ALL70012	3.70	37-10
ALL70014	3.89	35-9
ALL70016	4.11	37-9
ALL70018	4.33	39-9
ALL70020	4.56	41-9
ALL70022	4.71	33-7
ALL70024	4.86	34-7
ALL70026	5.00	30-6
ALL70028	5.14	36-7
ALL70030	5.29	37-7
ALL70032	5.43	38-7
ALL70034	5.67	34-6
ALL70036	5.83	35-6
ALL70038	6.00	30-5
ALL70040	6.20	31-5
ALL70042	6.33	38-6
ALL70044	6.50	39-6
GM 8.5" (10-Bolt) 30-Spline Pinion		
8.50" Diam. Ring Gear 1.625" Diam. Pinion Stem		
ALL70120	3.08	40-13
ALL70122	3.42	41-12
ALL70124	3.73	41-11
ALL70126	4.10	41-10
ALL70128	4.56	41-9
GM 7.5" (10-Bolt) 27-Spline Pinion		
7.50" Diam. Ring Gear 1.438" Diam. Pinion Stem		
ALL70110	*3.23	42-13
ALL70112	*3.42	41-12
ALL70113	**3.42	41-12
ALL70114	*3.73	41-11
ALL70115	**3.73	41-11
ALL70116	*4.10	41-10
ALL70117	**4.10	41-10
ALL70118	*4.56	41-9
*Set includes standard width ring gear for use with 3.23 and numerically higher ratio carriers or when using 3.08 and numerically lower ratio carriers and ALL70100 spacer.		
**Set includes thick ring gear for use with 3.08 and numerically lower ratio carriers.		



Related Component:

ALL70100.....7.5" Ring Gear Spacer, .3125" Thick,
Includes (10) 7/16"-20 x 1-1/4" UHL Bolts

REV042920

Allstar Performance 8300 Lane Dr., Watervliet, MI 49098
Phone: (269) 463-8000 Fax: (800) 772-2618 www.allstarperformance.com