



Part No. ALL72313
ALL72314

1-Ton Wide 5 Wheel Bearing Kits

Kits contain all components to install one hub assembly including a hub seal, inner bearing, inner race, outer bearing and outer race. REM finished bearings and races feature a special polished finish for reduced drag over standard bearing/race combinations.

Part No.	Description
ALL72313.....	Kit with Standard Bearings
ALL72314.....	Kit with REM Finished Bearings



Replacement Parts:
ALL72130.....Seal

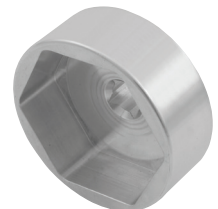
Related Parts:
ALL72176.....Spindle Lock Nut Kit
ALL10114.....Spindle Nut Socket



ALL72130



ALL72176



ALL10114

REV082522

Allstar Performance 8300 Lane Dr., Watervliet, MI 49098
Phone: (269) 463-8000 Fax: (800) 772-2618 www.allstarperformance.com