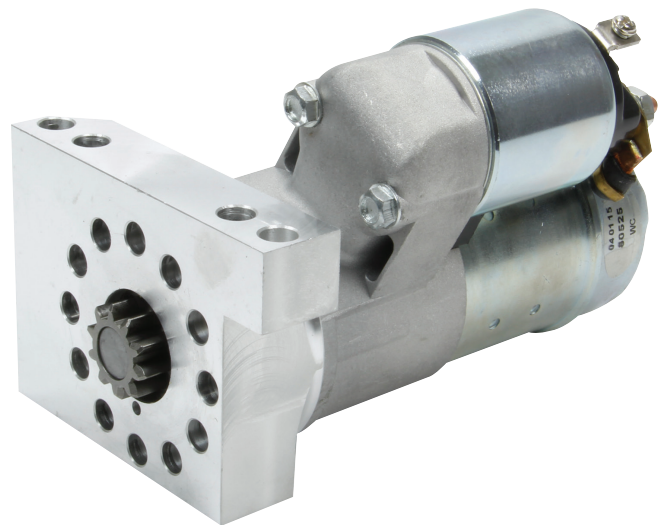
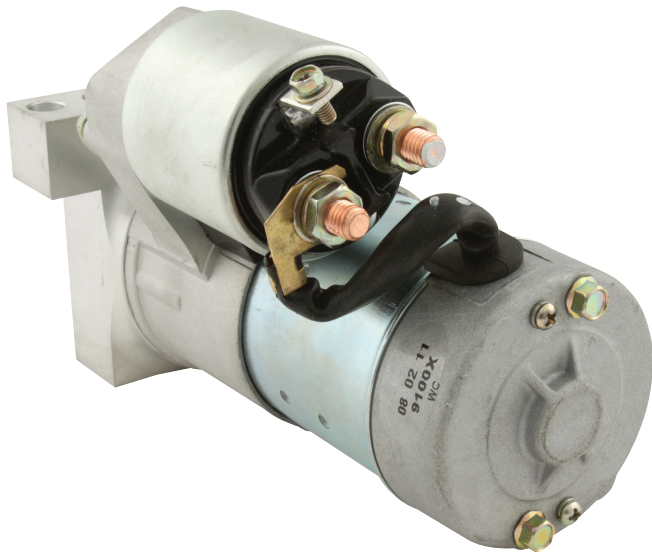




Part No. ALL80525

## Street Performance Chevy Mini Starter

SB Chevy clockable starter has twelve mounting positions and is a good choice for street or crate engines. Starter has 1.4kw permanent magnet and weighs only 7.5 lbs. Clears most kickout oil pans and works with 153- and 168-tooth flywheels or flexplates. Use with compression ratios up to 10.5:1. Mounting bolts and shim kit included.



### Tech Tip:

Due to variances in design between manufacturers (Flexplate, Block, Starter, and Crankshaft), you may need to install or remove starter shims between the starter mounting block and engine. If the starter is engaging too hard, install shims at the mounting point. If there's not enough engagement, the starter is not catching enough teeth on the flexplate, and you'll need to remove the shims. Some starters also have shims between the mounting block and motor to adjust the reach of the gear to the flexplate.

### Replacement Components:

ALL80526.....Starter Solenoid

ALL80527.....Bolts And Shims



ALL80526



ALL80527

REV042624

**Allstar Performance 8300 Lane Dr., Watervliet, MI 49098**  
**Phone: (269) 463-8000 Fax: (800) 772-2618 [www.allstarperformance.com](http://www.allstarperformance.com)**